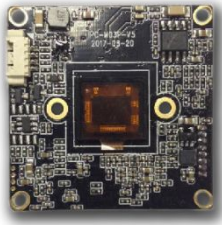


S238H18C / S238H18CF

1.4 megapixel Low-light IP Camera Module, Hi3518C + SONY IMX238

1/3" 1.4 Megapixels Progressive Scan Sony Exmor CMOS, Hisilicon Hi3518C Chipset, the highest resolution of 1280×1024, 0.01 Lux@F1.2 (color); 0.001 Lux@F1.2 (black and white); 38 mm * 38 mm single board; IR - CUT (day/night), adapt Box, Bullet, Dome and so on; H.264 video coding, double stream, ONVIF 2.4, be compatible many NVR and platform management software.



Features

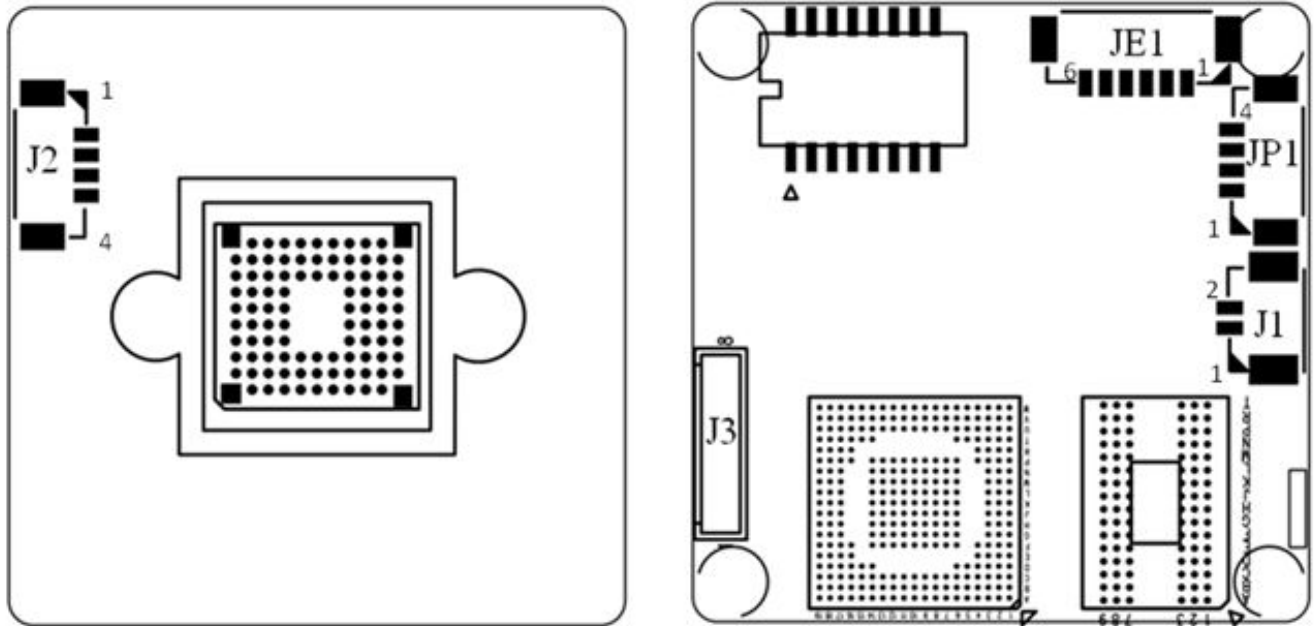
- > Hisilicon 3518C
- > 1/3" 1.4 Megapixels Progressive Scan Sony Exmor CMOS
- > Max 25/30fps@1.4 Megapixels (1280x1024, 1280x960, 1280x720)
- > H.264 & MJPEG dual-stream encoding
- > DWDR, Day/Night (ICR), AWB, AGC
- > Multiple network monitoring: Web viewer, Smart phone.
- > 3D DNR
- > Privacy Mask, Motion Detection
- > Support Onvif 2.4 protocol
- > Support image rotation 90° or 270°

Specifications

Model	S238H18C	S238H18CF
Camera		
Image Sensor	1/3" 1.4 Megapixels Progressive Scan Sony IMX238Exmor CMOS	
CPU	Hisilicon 3518C	
Effective Pixels	1280(H)x1024(V)	
Scanning System	Progressive	
Electronic Shutter Speed	Auto (1/25 ~ 1/10000s)	
Min. Illumination	0. 1Lux/F1.2 (Color), 0.01Lux/F1.2(B/W)	
S/N Ratio	≥50db(AGC OFF)	
Camera Features		
Day/Night	Auto(ICR)/Color/B/W	
WDR	Digital WDR	
White Balance	Auto	
Gain Control	Auto	
Noise Reduction	3D	
Privacy Masking	Up to 4 areas	
Video		

Compression	H.264/MJPEG	
Resolution	1024P(1280×1024)/960P(1280*960)/720P(1280×720)/D1(704×576)/VGA(640*480)/QVGA(320×240)	
Frame Rate	Main Stream	1024P/960P/720P(1 ~ 25/30fps)
	Sub Stream	D1/VGA/QVGA(1 ~ 25/30fps)
Bit Rate	32KB ~16Mbps, support VBR, CBR	
Text Overlay	Channel, Date & Time, Bit Rate	
Network		
Data Storage	Video record, Picture format	
Trigger	Manual, Automatic(motion detection, alarm, schedule, cycle)	
Alarm data transmission	FTP, E-mail, Browser, CMS	
Protocol	TCP/IP、UDP、RTP、RTSP、RTCP、HTTP、DNS、DDNS、DHCP、FTP、NTP、PPPOE、SMTP、UPNP	
ONVIF	ONVIF 2.4	
Max. User Access	16 users, IE, Google, Firefox	
Smart Phone	Windows Mobile, iPhone, iPad, Android	
Auxiliary Interface		
Audio in	N/A	Support
Audio out	N/A	Support
BNC Video out	N/A	N/A
Memory Slot	N/A	N/A
USB	N/A	Support
Alarm in	N/A	N/A
Alarm out	N/A	N/A
IO Interface	N/A	Reset
General		
Power Supply	DC12V / PoE (802.3af)	
Power Consumption	<3W	
Working Environment	-20°C~+55°C , Less than 90% RH	
Dimensions	38mm×38mm×15mm	
Weight	0.06kg	

Connector



JP1 Power Supply Connector

1	DC12V
2	CMT_R
3	CMT_R
4	GND

JE1 Network Connector

1	RJ45_1
2	RJ45_2
3	RJ45_3
4	RJ45_6
5	Network Connected Light (Green light)
6	Network Status Light (Yellow light)

J1 IR-cut Connector

1	IR-CUT Control Signal 5V
2	IR-CUT Control Signal 5V

J2 IR Light Board Connector

1	IR Light Board Power Supply (12V)
2	GND
3	IR Feedback Signal Input (0.8V-12V)
4	IC PWM Control

J3 Functions Connector (J3 only for S238H18CF)

1	Audio in
2	Audio GND
3	Audio out
4	Reset
5	GND
6	USB_DP

7	USB_DM
8	5V Power supply